

DESCRIPTION

Solenoid valve 2 way normally closed
direct acting poppet type

CONSTRUCTION

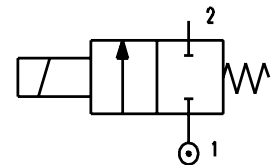
Body	Brass
Armature tube	Brass
Plunger and core	Stainless steel
Springs	Stainless steel
Seal material	NBR - FPM - EPDM



2

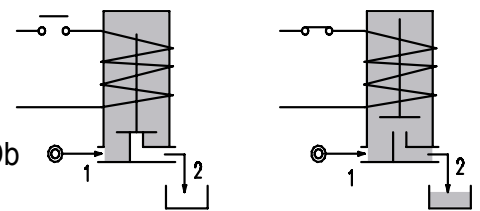
FEATURES

Maximum fluid viscosity 25cSt (mm²/s)
Ambient temperature: +14°F +131°F (class F coil)
 +14°F +140°F (UL certified coil)
Universal mounting position



OPTIONS:

Stainless steel armature tube
Electroless nickel plating
Series 7 explosion proof coil according to
⊕ ATEX II 2G Ex mb IIC T6, T5, T4 Gb
II 2D Ex mb IIIC T85°C, T100°C, T135°C Db
similar to NEC 505 Div.1 Class II IIC T6
Version for use with industrial oxygen



CODE ① ②	Square Flange □1in (□25mm)	Orifice Size		Flow Factor Cv (gpm)	Operating Pressure Differential (M.O.P.D.) ③				Nominal power			Coil		Seal ①	Temp. range (°F)	
		(in)	(mm)		Min	Max		AC (VA)	DC (W)	Series	Width (mm)					
						AC (psi)	bar					DC (psi)	bar			
E112X...12///...	□1in (□25mm)	0.047	1.2	0.046	0	362	25	362	25	12	8	6.5	3	22	NBR=B	+14 +194
E112X...15///...		0.059	1.5	0.069	0	261	18	232	16							
E112X...20///...		0.079	2	0.104	0	174	12	145	10							
E112X...25///...	□1in (□25mm)	0.098	2.5	0.162	0	108	7.5	65	4.5	15	11	8	4	30	EPDM=E	+14 +284
E112X...20///...		0.079	2	0.104	0	362	25	217	15							
E112X...25///...	□1in (□25mm)	0.098	2.5	0.162	0	232	16	116	8						FPM=V	+14 +284

① Seal

Ordination example: E112XB20///U350 NBR seal

② Coil

Coil 12V DC certified  and marked **CE**

③ Safe Working Pressure: 725 psi. Is the line or system pressure to which the valve may be subjected without being damaged.
The maximum allowable pressure PS for steam is 36 psi.

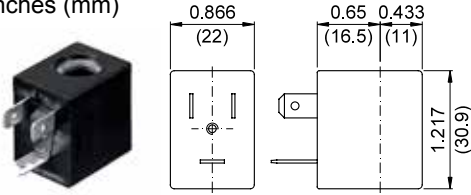
COILS Code ②	Alternating Current						Direct Current				Electrical connection	Connectors
	24V		120V		240V		12V		24V			
Series 3 Width 22mm	U35B c	30B	U35D c	30D	U35F c	30F	U350 c	300	U351 c	301	DIN 46244	PG9 code 10348000
Series 4 Width 30mm	-	40B	-	40D	-	40F	U450 c	400	U451 c	401	DIN 43650A	PG9 code 10349000

DESCRIPTION
 Class F or H insulation
 Voltage tolerance ±10%
 Protection class:
 IP65 with connector attached
 IP00 without connector
 Continuous service ED100%

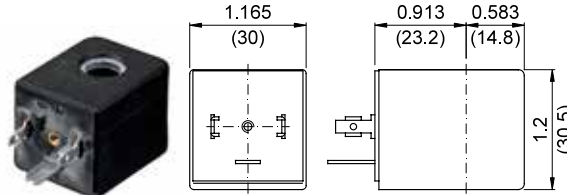
OPTIONS
 Cable attached
 Special coil voltage
 Special coil powers

OVERALL DIMENSIONS

inches (mm)



Series 3 Weight 0.11lb (0.05Kg)

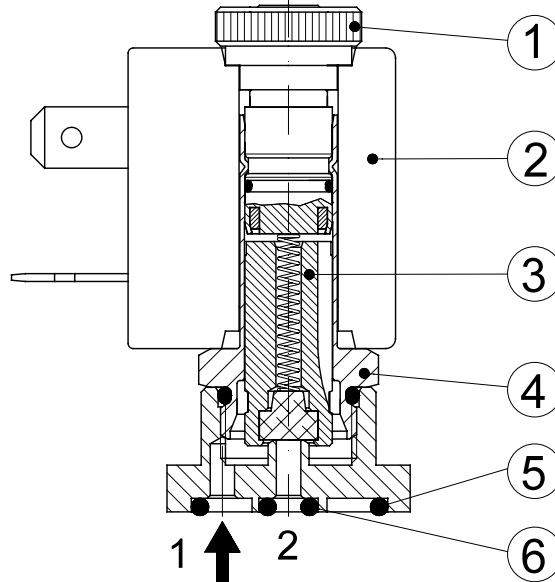


Series 4 Weight 0.22lb (0.1Kg)

FOR COIL SPECIFICATION SEE SECTION 6

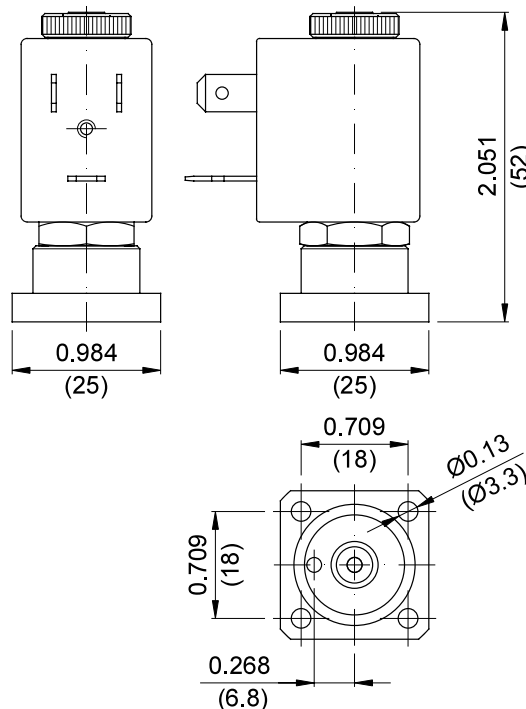
SPARE PARTS LIST

1. Coil fixing nut
2. Coil
3. Plunger assembly assembly
4. Armature tube assembly
5. OR 2068
6. OR 2010



OVERALL DIMENSIONS

inches (mm)



Weight with coil series 3=0.26lb (0.12Kg)
 Weight with coil series 4=0.37lb (0.17Kg)