

DESCRIPTION

Solenoid valve 2 way normally closed with servo-assisted piston

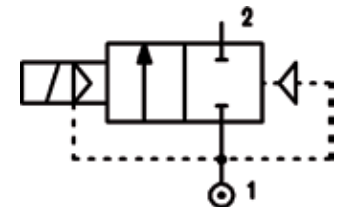
CONSTRUCTION

Body and cover	Brass
Armature tube	Stainless steel
Plunger and core	Stainless steel
Springs	Stainless steel
Piston	Brass
Piston seal	PTFE reinforced
Seal material	Main seal PTFE, other FPM



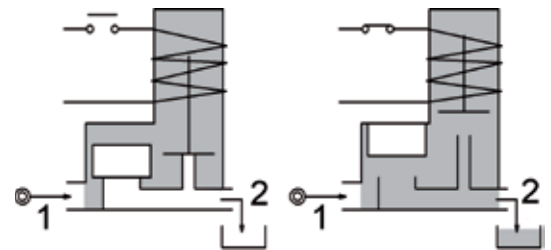
FEATURES

- Minimum differential pressure 14.5psi
- Maximum fluid viscosity 25cSt (mm²/s)
- Ambient temperature: +14°F +131°F (class F coil)
+14°F +140°F (UL certified coil)
- Preferred mounting position with vertical coil above



4

OPTIONS: Electroless nickel plating



CODE	Port Size	Orifice Size		Flow Factor Cv	Operating Pressure Differential (M.O.P.D.) ②						Nominal power			Coil		Seal	Temp. range (°F)
		NPT	(in)		(mm)	Min		Max		AC (VA)	DC (W)	Series	Width (mm)				
						(psi)	(bar)	(psi)	(bar)					Inrush	Holding		
E119CNV12///...	3/8	0.472	12	2.31	14.5	1	435	30	435	30	20	15	10	2	30	PTFE/ FPM	+14 +284
E119DNV12///...	1/2	0.472	12	2.54	14.5	1	435	30	435	30							
E119DNV12/1/...	3/8	0.472	12	2.31	14.5	1	725	50	725	50	40	30	27	5	36		
E119DNV12/1/...	1/2	0.472	12	2.54	14.5	1	725	50	725	50							

Ordination example: E119DNV12///U251 FPM/PTFE seal, connection 1/2 NPT

① Coil

Coil 24V DC certified and marked

② Safe Working Pressure: 870 psi. Is the line or system pressure to which the valve may be subjected without being damaged. The maximum allowable pressure PS for steam is 36 psi.

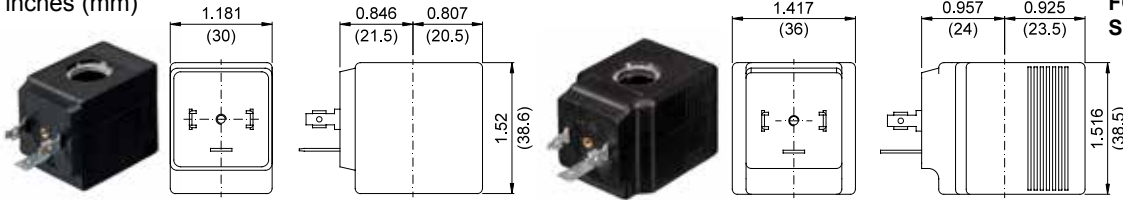
COILS Code ①	Alternating Current						Direct Current				Electrical connection	Connectors
	24V		120V		240V		12V		24V			
Series 2 Width 30mm	U25B c us	20B	U25D c us	20D	U25F c us	20F	U250 c us	200	U251 c us	201	DIN 43650A	PG9 code 10349000
Series 5 Width 36mm	-	52B	-	52D	-	52F	-	520	-	521	DIN 43650A	PG11 code 10349001

DESCRIPTION
 Insulation class F or H
 Voltage tolerance ±10%
 Protection class:
 IP65 with connector attached
 IP00 without connector
 Continuous service ED100%

OPTIONS
 Cable attached
 Special coil voltage
 Special coil powers

OVERALL DIMENSIONS

inches (mm)



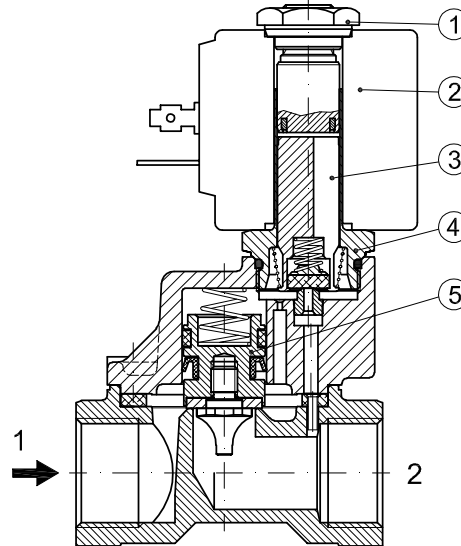
Series 2 Weight 0.26lb (0.12Kg)

Series 5 Weight 0.44lb (0.20Kg)

FOR COIL SPECIFICATION SEE SECTION 6

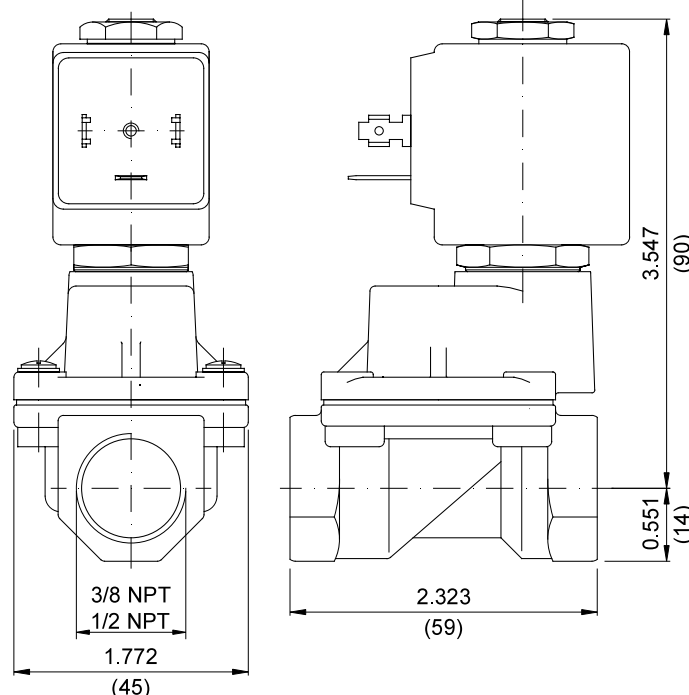
SPARE PARTS LIST

1. Coil fixing nut
2. Coil
3. Plunger assembly
4. Armature tube assembly
5. Piston assembly



OVERALL DIMENSIONS

inches (mm)



Weight 1.39lb (0.63Kg)