

DESCRIPTION

Solenoid valve 2 way normally closed
direct acting with dry armature.
No metal parts in contact with the media.

CONSTRUCTION

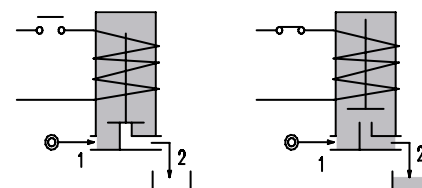
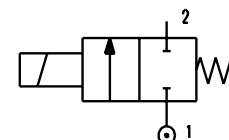
Body	Acetal copolymer
Armature tube	Stainless steel
Plunger and core	Stainless steel
Springs	Stainless steel
Seal material	SILICONE

FEATURES

Maximum fluid viscosity 25cSt (mm²/s)
Ambient temperature: +14°F +131°F (class F coil)
+14°F +140°F (UL certified coil)
Mounting position with vertical coil above



2



CODE ②	Port type *	Orifice Size		Flow Factor Cv (gpm)	Operating Pressure Differential (M.O.P.D.) ③				Nominal power			Coil		Seal	Temp. range (°F)	
					Min	Max		AC (VA) Inrush Holding	DC (W)	Series	Width (mm)					
		AC (psi)	DC (bar)			AC (psi)	DC (bar)									
E161PS8///...	HOSETAIL DN8	0.315	8	1.27	0	2.17	0.15	2.17	0.15	20	15	10	2	30	SILICONE=S	<+200

For use with VACUUM - feeds from 2 to 1






CODE ②	Port type *	Orifice Size		Flow Factor Cv (gpm)	Operating Pressure Differential (M.O.P.D.)				Nominal power			Coil		Seal	Temp. range (°F)	
					Min	Max		AC (VA)		DC	Series	Width				
		AC	DC													
						(psi)	(bar)	(psi)	(bar)				Inrush			Holding
E161PS8/V/...	HOSETAIL DN8	0.315	8	1.27	0	-13	-0.9	-10	-0.7	20	15	10	2	30	SILICONE=S	<+200

② Coil

Ordination example: E161PS8///U251

Coil 24V DC certified  us and marked 

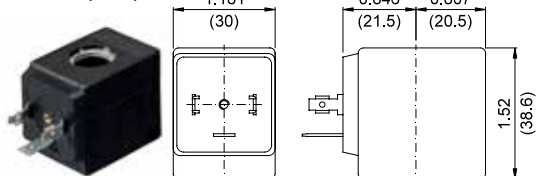
③ Safe Working Pressure: 29 psi. Is the line or system pressure to which the valve may be subjected without being damaged.

COILS Code ②	Alternating Current						Direct Current				Electrical connection	Connectors
	24V		120V		240V		12V		24V			
Series 2 Width 30mm	U25B C  US	201	U25D C  US	20D	U25F C  US	20F	U250 C  US	200	U251 C  US	201	DIN 43650A	PG9 code 10349000

DESCRIPTION
Insulation class F or H
Voltage tolerance $\pm 10\%$
Protection class:
 IP65 with connector attached
 IP00 without connector
Continuous service ED100%

OVERALL DIMENSIONS

inches (mm)



Series 2 Weight 0.26lb (0.12Kg)

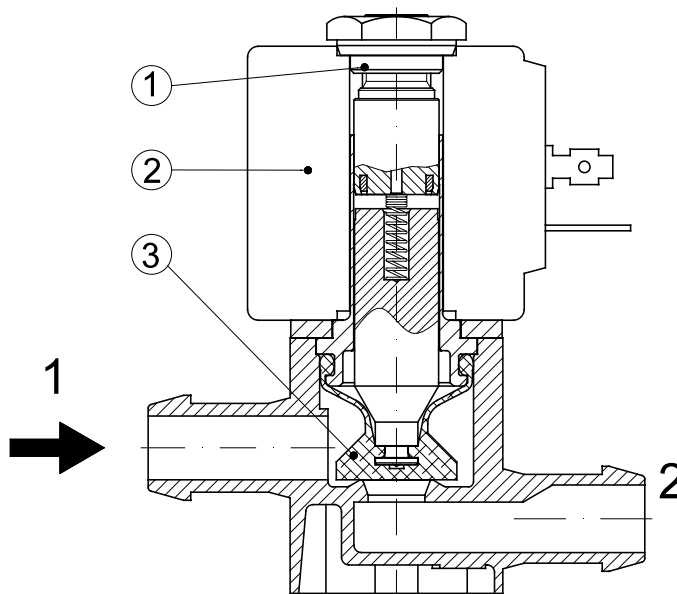
OPTIONS

Cable attached
Special coil voltage
Special coil powers

**FOR COIL SPECIFICATION SEE
SECTION 6**

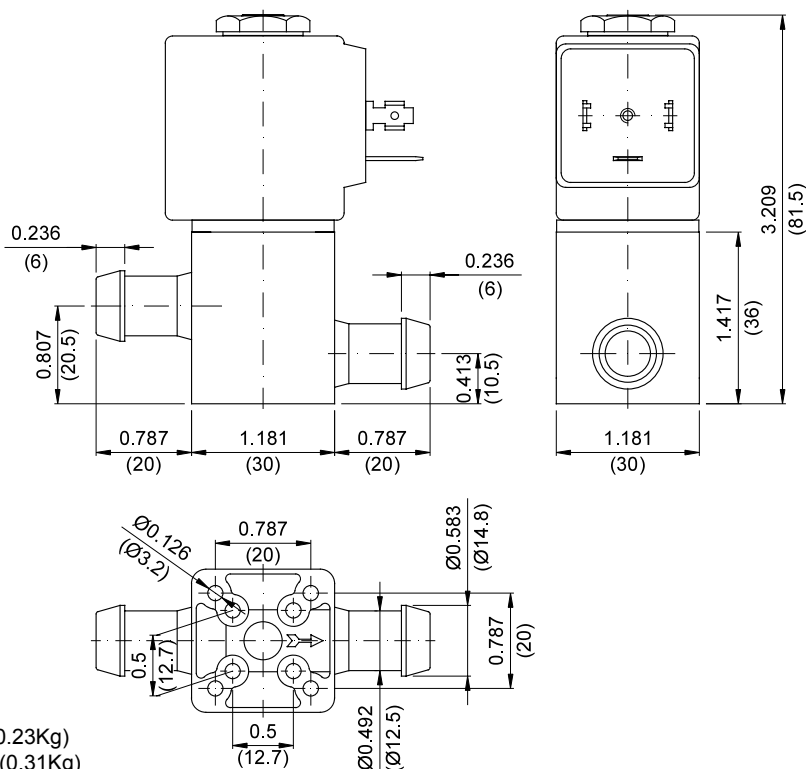
SPARE PARTS LIST

1. Coil fixing nut
2. Coil
3. Diaphragm



OVERALL DIMENSIONS

inches (mm)



Weight with coil series 2=0.5lb (0.23Kg)
Weight with coil series 5=0.68lb (0.31Kg)