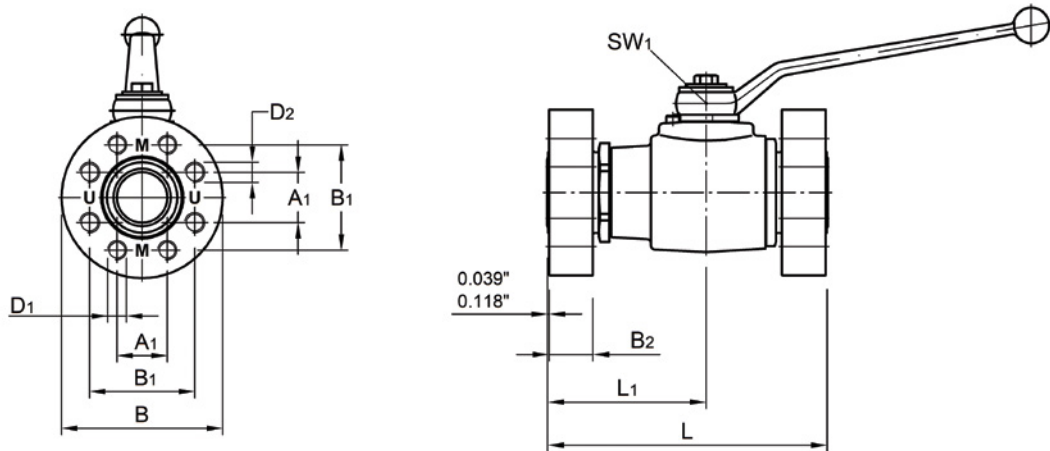


ABF Series - Two-Way Forged Body Flat Face



- Flat face both ends
- Carbon steel with zinc nickel plating
- Duplex/316 stainless steel available from stock
- POM seats and Buna O-rings standard on carbon steel valves (-11DB)
- POM seats and Viton O-rings standard on stainless steel valves (-22DV)
- Both metric (ISO 6162) and UNC (SAE J518) threads standard on all valves
- Handle shown in Handle Code field supplied standard
- Dimensions in inches unless otherwise noted
- Dimensions subject to change without notice



ABF SERIES CODE 61/CODE 62																
CODE 61 PART NUMBER	CODE 62 PART NUMBER	DN (NOMINAL SIZE IN MM)	FLANGE SIZE	D1	D2	A1	B1	B2	L	L1	B	SW1	HANDLE CODE CC/SS (SEE PG 50-51)	WEIGHT (LBS)	PSI MAX	LOCKING KIT # (SEE PG 48-49)
ABF3#20	ABF6#20	32	1-1/4	M10/ M12	7/16 - 14 UNC/ 1/2 - 13 UNC	1.19/1.25	2.31/2.63	0.98	7.13	4.09	3.35/3.94	0.67	21/37	11.0	4060/6090	LK32/40/50FF
ABF3#24	ABF6#24	38	1-1/2	M12/ M16	1/2 - 13 UNC/ 5/8 - 11 UNC	1.41/1.44	2.75/3.13	1.06/1.38	8.23	4.65	3.94/4.72	0.67	21/37	22.5	3045/6090	LK32/40/50FF
ABF3#32	ABF6#32	51	2	M12/ M20	1/2 - 13 UNC/ 3/4 - 10 UNC	1.69/1.75	3.06/3.81	1.06/1.50	9.43	5.12	4.33/5.51	0.67	22/38	31.1	3045/6090	LK32/40/50FF



ABF Series - Two-Way Forged Body Flat Face

Model Code Breakdown

ABF3 #32 - 1 1 D B _

VALVE SERIES

ABF3	Code 61
ABF6	Code 62

CONNECTION SIZE

BODY & ADAPTER MATERIAL

1	Carbon Steel
2	Duplex/ 316 Stainless Steel

BALL & STEM MATERIAL

1	Carbon Steel
2	316 Stainless Steel

**LOCKING KIT OR
OPTIONAL HANDLE CODE**
(See pages 48-51)

ADAPTER & STEM SEALS

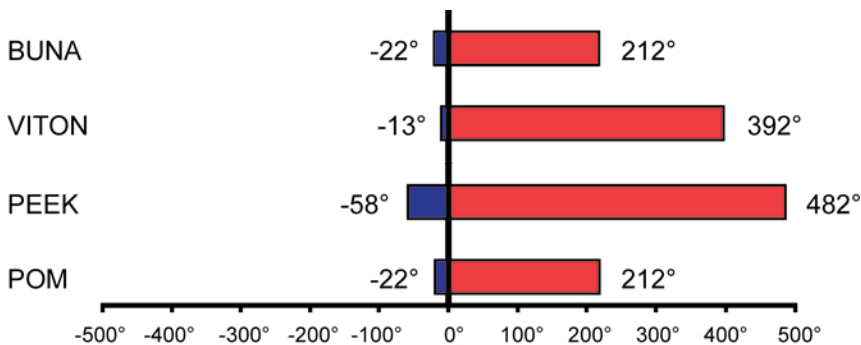
B	Buna
V	Viton

BALL & STEM SEATS

D	POM- Standard
---	---------------

Please consult your system's seal manufacturer for recommendation of seal selection, as Anchor Fluid Power does not accept responsibility for seal selection.

MAXIMUM & MINIMUM WORKING TEMPERATURES FOR SEAL MATERIALS



All temperatures are in degrees Fahrenheit.