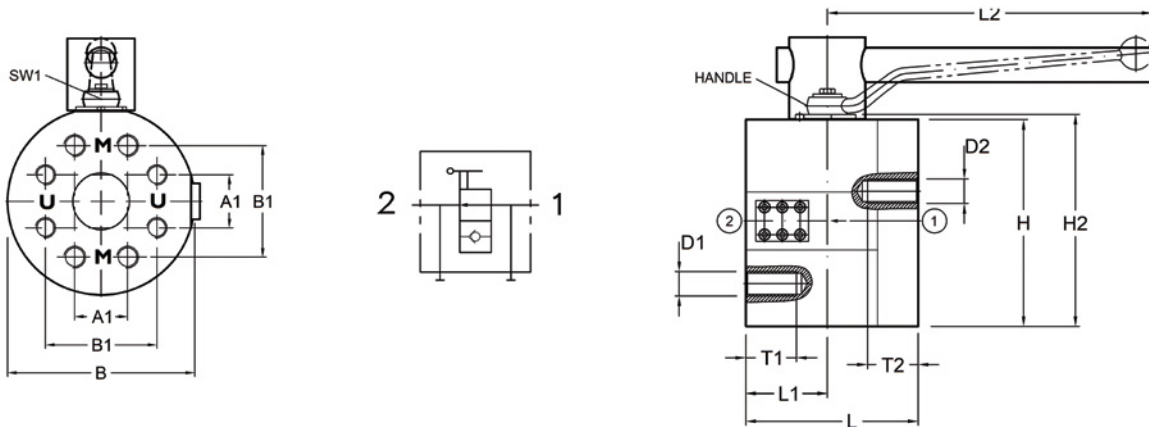


# ARS Series - Two-Way Direct Mount



- Carbon steel with zinc nickel plating
- 316 stainless steel available from stock
- POM seats and Buna O-rings standard on carbon steel valves (-11DB)
- POM seats and Viton O-rings standard on stainless steel valves (-22DV)
- Both metric (ISO 6162) and UNC (SAE J518) threads standard on all valves
- Bypass port with blanking flange standard. Add APK2#4 to use as bypass valve.
- Handle shown in Handle Code field supplied standard
- Dimensions in inches unless otherwise noted
- Dimensions subject to change without notice



ARS SERIES																		
PART NUMBER	DN (NOMINAL SIZE IN MM)	FLANGE SIZE	D1	T1	D2	T2	A1	B1	L	L1	B	H	H2	SW1	HANDLE CODE (SEE PG 50-51)	WEIGHT (LBS)	PSI MAX	LOCKING KIT # (SEE PG 48-49)
ARS3#40	64	2-1/2	M12	27	1/2 - 13 UNC	1.06	2.00	3.50	5.91	2.97	7.09	6.89	7.09	0.67	22	61.7	2500	LK32/40/50
ARS3#48	76	3	M16	30	5/8 - 11 UNC	1.18	2.44	4.19	6.10	3.17	8.19	7.95	-	0.75	58	94.8	2300	LK76/102/127
ARS3#64	102	4	M16	30	5/8 - 11 UNC	1.18	3.06	5.13	6.69	3.35	10.16	9.88	-	1.06	57	160.9	500	LK76/102/127



# ARS Series - Two-Way Direct Mount

## Model Code Breakdown

ARS3 #40 - 1 1 D B -

**VALVE SERIES**

ARS3	Code 61
------	---------

**OPTIONAL LOCKING KIT**  
(See pages 49)

**CONNECTION TYPE/SIZE**

**ADAPTER & STEM SEALS**

B	Buna
V	Viton

**BODY & ADAPTER MATERIAL**

1	Carbon Steel
2	316 Stainless Steel

**BALL & STEM SEATS**

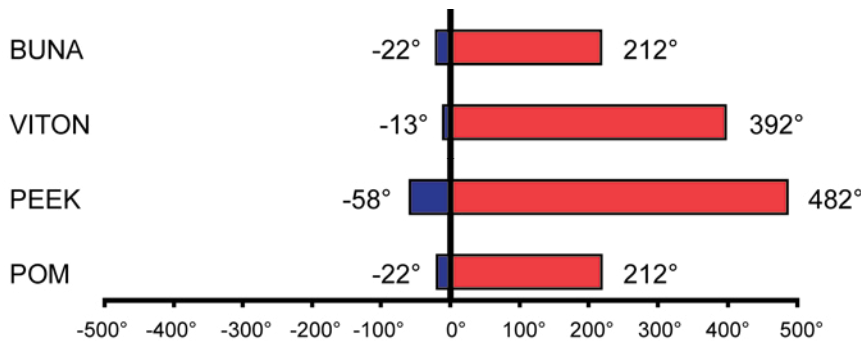
D	POM- Standard
---	---------------

**BALL & STEM MATERIAL**

1	Carbon Steel
2	316 Stainless Steel

Please consult your system's seal manufacturer for recommendation of seal selection, as Anchor Fluid Power does not accept responsibility for seal selection.

### MAXIMUM & MINIMUM WORKING TEMPERATURES FOR SEAL MATERIALS



All temperatures are in degrees Fahrenheit.

- TEST POINT ADAPTERS
- INLINE VALVES
- BALL VALVES**
- QUICK COUPLINGS
- WELD COUPLINGS
- SUCTION AND RETURN
- C/S FLANGES
- S/S FLANGES