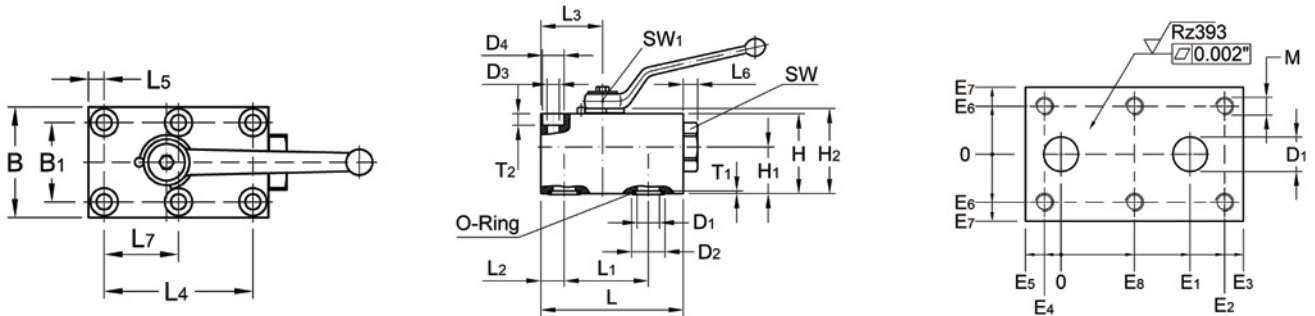


# APK Series - Two-Way Manifold Mount



- Carbon steel with zinc nickel plating
- POM seats and Buna O-rings standard on carbon steel valves (-11DB)
- Handle shown in Handle Code field supplied standard
- Dimensions in inches unless otherwise noted
- Dimensions subject to change without notice



| APK SERIES   |                         |      |      |      |      |      |      |      |      |      |      |      |      |      |      |      |      |      |      |      |      |      |                            |              |         |
|--------------|-------------------------|------|------|------|------|------|------|------|------|------|------|------|------|------|------|------|------|------|------|------|------|------|----------------------------|--------------|---------|
| PART NUMBER  | DN (NOMINAL SIZE IN MM) | L    | L1   | L2   | L3   | L4   | L5   | L6   | L7   | B    | B1   | H    | H1   | H2   | T1   | T2   | D1   | D2   | D3   | D4   | SW   | SW1  | HANDLE CODE (SEE PG 50-51) | WEIGHT (LBS) | PSI MAX |
| APK2#4-11DB  | 6                       | 2.32 | 1.38 | 0.33 | 0.93 | 1.38 | 0.33 | 0.18 | 0.69 | 1.57 | 1.06 | 1.38 | 0.79 | 1.48 | 0.07 | 0.27 | 0.24 | 0.47 | 0.25 | 0.43 | 0.94 | 0.28 | 12                         | 1.3          | 7250    |
| APK2#6-11DB  | 10                      | 2.87 | 1.73 | 0.39 | 1.14 | 2.17 | 0.30 | 0.28 | 1.08 | 2.17 | 1.57 | 1.77 | 0.96 | 1.91 | 0.07 | 0.31 | 0.37 | 0.59 | 0.33 | N/A  | 1.26 | 0.31 | 13                         | 2.6          | 7250    |
| APK2#8-11DB  | 12                      | 3.86 | 2.28 | 0.63 | 1.67 | 3.27 | 0.30 | 0.39 | 1.63 | 2.36 | 1.77 | 2.17 | 1.26 | 2.30 | 0.07 | 0.31 | 0.49 | 0.98 | 0.33 | N/A  | 1.42 | 0.39 | 14                         | 5.0          | 7250    |
| APK2#12-11DB | 20                      | 4.61 | 2.72 | 0.79 | 2.05 | 3.82 | 0.39 | 0.47 | 1.91 | 2.76 | 2.01 | 2.76 | 1.54 | 2.91 | 0.11 | 0.43 | 0.79 | 1.18 | 0.41 | 0.67 | N/A  | 0.55 | 15                         | 8.8          | 5800    |
| APK2#16-11DB | 25                      | 5.43 | 3.19 | 0.94 | 2.44 | 4.53 | 0.39 | 0.28 | 2.26 | 3.15 | 2.36 | 3.15 | 1.81 | 3.31 | 0.11 | 0.43 | 0.94 | 1.38 | 0.41 | 0.67 | 1.97 | 0.55 | 15                         | 12.8         | 5800    |
| APK2#20-11DB | 32                      | 6.50 | 3.78 | 1.14 | 2.95 | 5.35 | 0.47 | 0.43 | 2.68 | 3.94 | 3.07 | 3.94 | 2.23 | 4.11 | 0.11 | 0.47 | 1.26 | 1.57 | 0.51 | 0.75 | 2.76 | 0.67 | 21                         | 24.2         | 5800    |
| APK2#24-11DB | 40                      | 6.89 | 4.41 | 1.12 | 3.33 | 4.41 | 1.12 | 0.98 | 2.20 | 5.12 | 3.74 | 3.94 | 2.07 | 4.11 | 0.11 | 0.69 | 1.50 | 1.91 | 0.67 | 1.02 | N/A  | 0.67 | 21                         | 33.6         | 5800    |

| APK SERIES   |                         |      |      |      |      |      |      |      |      |      |     |              |                              |
|--------------|-------------------------|------|------|------|------|------|------|------|------|------|-----|--------------|------------------------------|
| PART NUMBER  | DN (NOMINAL SIZE IN MM) | D1   | E1   | E2   | E3   | E4   | E5   | E6   | E7   | E8   | M   | O-RING (MM)  | LOCKING KIT # (SEE PG 48-49) |
| APK2#4-11DB  | 6                       | 0.24 | 1.38 | 1.38 | 1.99 | 0.00 | 0.33 | 0.53 | 0.79 | 0.69 | M6  | 7.50 X 2.50  | LK4/6FF                      |
| APK2#6-11DB  | 10                      | 0.37 | 1.73 | 2.07 | 2.48 | 0.10 | 0.39 | 0.79 | 1.08 | 0.98 | M8  | 10.50 X 2.50 | LK8/10FF                     |
| APK2#8-11DB  | 12                      | 0.61 | 2.28 | 2.93 | 3.23 | 0.33 | 0.63 | 0.89 | 1.18 | 1.30 | M8  | 20.50 X 2.50 | LK12FF                       |
| APK2#12-11DB | 20                      | 0.79 | 2.72 | 3.43 | 3.82 | 0.39 | 0.79 | 1.00 | 1.38 | 1.52 | M10 | 23.50 X 3.50 | LK20/25FF                    |
| APK2#16-11DB | 25                      | 0.94 | 3.19 | 3.98 | 4.49 | 0.55 | 0.94 | 1.18 | 1.57 | 1.71 | M10 | 28.50 X 3.50 | LK20/25FF                    |
| APK2#20-11DB | 32                      | 1.26 | 3.78 | 4.69 | 5.35 | 0.67 | 1.14 | 1.54 | 1.97 | 2.01 | M12 | 33.50 X 3.50 | LK32/40/50FF                 |
| APK2#24-11DB | 40                      | 1.50 | 4.41 | 4.41 | 5.77 | 0.00 | 1.12 | 1.87 | 2.56 | 2.20 | M16 | 42.00 X 3.50 | LK32/40/50FF                 |



# APK Series - Two-Way Manifold Mount

## Model Code Breakdown

APK2 #20 - 1 1 D B

**VALVE SERIES**

|      |                      |
|------|----------------------|
| APK2 | Manifold Mount 2-way |
|------|----------------------|

**CONNECTION SIZE**

|     |  |
|-----|--|
| #20 |  |
|-----|--|

**BODY & ADAPTER MATERIAL**

|   |              |
|---|--------------|
| 1 | Carbon Steel |
|---|--------------|

**BALL & STEM MATERIAL**

|   |              |
|---|--------------|
| 1 | Carbon Steel |
|---|--------------|

**ADAPTER & STEM SEALS**

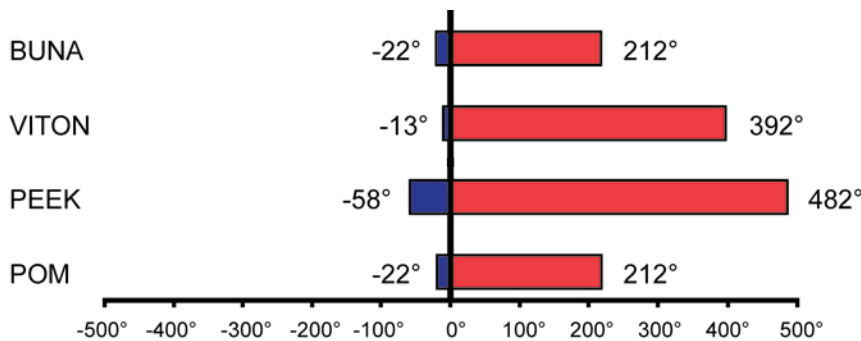
|   |                |
|---|----------------|
| B | Buna- Standard |
| V | Viton          |

**BALL & STEM SEATS**

|   |      |
|---|------|
| D | POM  |
| P | PEEK |

Please consult your system's seal manufacturer for recommendation of seal selection, as Anchor Fluid Power does not accept responsibility for seal selection.

### MAXIMUM & MINIMUM WORKING TEMPERATURES FOR SEAL MATERIALS



All temperatures are in degrees Fahrenheit.