

**DESCRIPTION**

Solenoid valve 2 way normally open direct acting poppet type, suitable for food applications and all compatible fluids.

**CONSTRUCTION**

Body	Thermoplastic polymer NSF, WRC, KTW, FDA certified
Armature tube	Brass chemically nickel plated
Plunger and core	Stainless steel
Springs	Stainless steel
Seal material	NBR - FPM - EPDM (food contact certified)

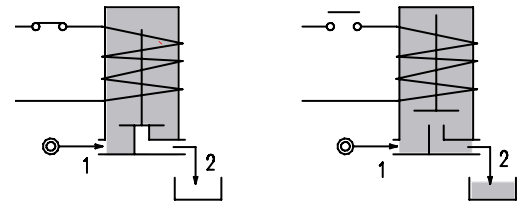
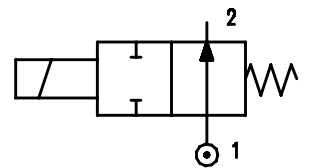


**2**

**FEATURES**

Maximum fluid viscosity 25cSt (mm<sup>2</sup>/s)  
 Ambient temperature: +14°F +131°F (class F coil)  
 +14°F +140°F (UL certified coil)  
 Universal mounting position

**OPTIONS:** Stainless steel armature tube



CONNECTIONS	
P	Z
<b>HOSETAIL</b> for flexible pipes	<b>PUSH IN</b> for semiflexible pipes Øext 5/32"

CODE ① ②	Port type *	Orifice Size		Flow Factor Cv (gpm)	Operating Pressure Differential (M.O.P.D.) ③				Nominal power			Coil		Seal ①	Temp. range ④ (°F)	
		(in)	(mm)		Min	Max		AC (VA) Inrush Holding	DC (W)	Series	Width (mm)					
						AC (psi) (bar)	DC ⑤ (psi) (bar)									
E235 * ...15///...	Z	0.059	1.5	0.069	0	188	13	188	13	12	8	6.5	3	22	NBR=B	+14 +194
E235 * ...20///...	Z	0.079	2	0.104	0	101	7	101	7							
E235 * ...25///...	P - Z	0.098	2.5	0.162	0	50	3.5	50	3.5	15	11	8	4	30	EPDM=E	+14 +284
D235 * ...15///...	Z	0.059	1.5	0.069	0	188	13	188	13							
D235 * ...20///...	Z	0.079	2	0.104	0	101	7	101	7							
D235 * ...25///...	P - Z	0.098	2.5	0.162	0	50	3.5	50	3.5						FPM=V	+14 +284

- ① Seal Ordination example: E235PA20///U351 NBR seal, hosetail connection
- ② Coil Coil 24V DC certified c us and marked
- ③ Safe Working Pressure:290 psi. Is the line or system pressure to which the valve may be subjected without being damaged. The maximum allowable pressure PS for steam is 36 psi.
- ④ The temperature range is related to the material of the seals (NBR, EPDM, FPM), and the valves' body. Please contact us concerning the temperature range referred to the different types of connection.
- ⑤ Direct current (DC) series 3 coil available only without UL certification

COILS Code ②	Alternating Current						Direct Current				Electrical connection	Connectors	DESCRIPTION Class F or H insulation Voltage tolerance $\pm 10\%$ Protection class: IP65 with connector attached IP00 without connector Continuous service ED100%
	24V		120V		240V		12V		24V				
Series 3 Width 22mm	U35B c	30B	U35D c	30D	U35F c	30F	-	300	-	301	DIN 46244	PG9 code 10348000	
Series 4 Width 30mm	-	40B	-	40D	-	40F	U450 c	400	U451 c	401	DIN 43650A	PG9 code 10349000	

**OPTIONS**  
Cable attached  
Special coil voltage  
Special coil powers

### OVERALL DIMENSIONS

inches (mm)



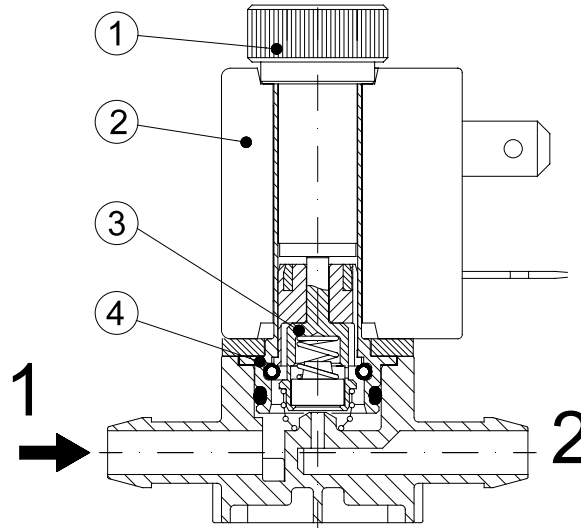
Series 3 Weight 0.11lb (0.05Kg)

Series 4 Weight 0.22lb (0.1Kg)

**FOR COIL SPECIFICATION SEE SECTION 6**

### SPARE PARTS LIST

1. Coil fixing nut
2. Coil
3. Seal assembly
4. Armature tube assembly

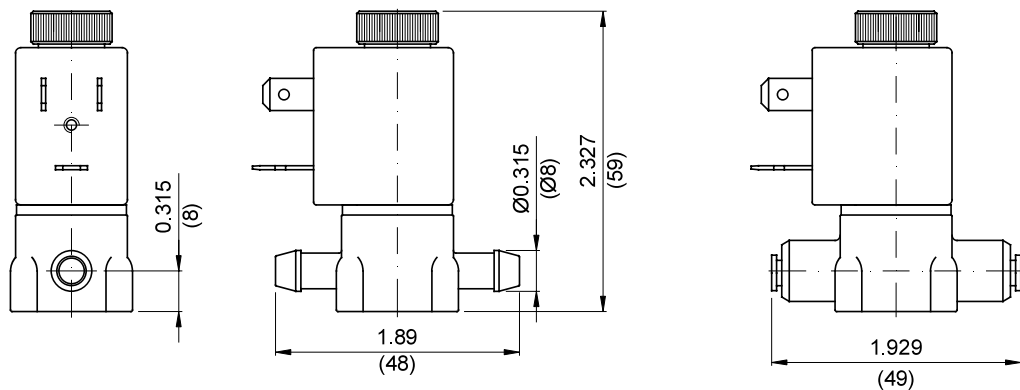


### OVERALL DIMENSIONS

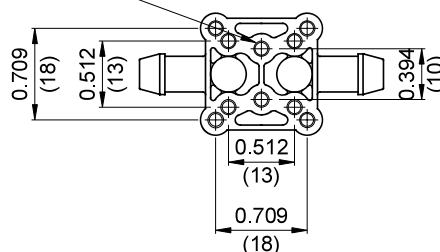
inches (mm)

P connection

Z connection



Holes for self-threading screws  $\text{Ø}0.118$  max depth 0.315  
Max tightening torque 5 Nm



Weight with coil series 3=0.22lb (0.10Kg)