

DESCRIPTION

Solenoid valve 2 way normally open in stainless steel AISI 316 with servo-assisted diaphragm

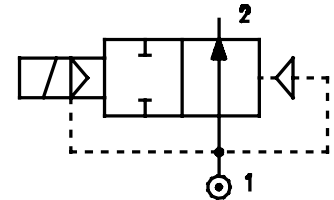
CONSTRUCTION

Body and cover	Stainless steel
Armature tube	Stainless steel
Plunger and core	Stainless steel
Springs	Stainless steel
Seal material	NBR - FPM - EPDM



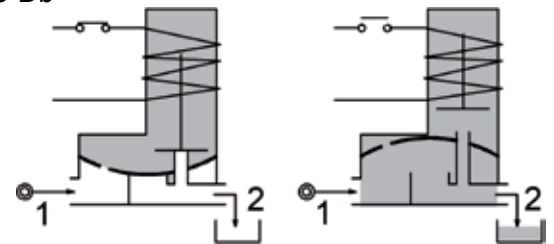
FEATURES

- Minimum differential pressure 2.2psi
- Maximum fluid viscosity 25cSt (mm²/s)
- Ambient temperature: +14°F +131°F (class F coil)
+14°F +140°F (UL certified coil)
- Preferred mounting position with vertical coil above



4

- OPTIONS:**
- Series 7 explosion proof coil according to
 - ⊕ ATEX II 2G Ex mb IIC T6, T5, T4 Gb
 - II 2D Ex mb IIIC T85°C, T100°C, T135°C Db
 - similar to NEC 505 Div.1 Class II IIC T6
 - Version with slow closing diaphragm
 - Version for use with oxygen
 - Silver shading ring



CODE	Port Size	Orifice Size	Flow Factor Cv	Operating Pressure Differential (M.O.P.D.) ③								Nominal power			Coil		Seal	Temp. range
				Min		Max				AC (VA)		DC (W)	Series	Width (mm)				
				(psi)	(bar)	AC	DC ④	Inrush	Holding									
E277CN...12///...	3/8	0.472	12	2.54	2.2	0.15	217	15	217	15	12	8	6.5	3	22	NBR=B	+14 +194	
E277DN...12///...	1/2	0.472	12	2.89	2.2	0.15	217	15	217	15								
E277EN...18///...	3/4	0.709	18	6.36	2.2	0.15	188	13	188	13								
E277FN...25///...	1	0.984	25	11.79	2.2	0.15	145	10	145	10	20	15	5	8	30	EPDM=E	+14 +284	
E277CN...12///...	3/8	0.472	12	2.54	2.2	0.15	217	15	217	15								
E277DN...12///...	1/2	0.472	12	2.89	2.2	0.15	217	15	217	15								
E277EN...18///...	3/4	0.709	18	6.36	2.2	0.15	188	13	188	13	20	15	5	8	30	FPM=V	+14 +284	
E277FN...25///...	1	0.984	25	11.79	2.2	0.15	145	10	145	10								

① Seal Ordination example: E277DNB12///U451 NBR seal, connection 1/2 NPT
 ② Coil Coil 24V DC certified us and marked

③ Safe Working Pressure:360 psi. Is the line or system pressure to which the valve may be subjected without being damaged. The maximum allowable pressure PS for steam is 36 psi.
 ④ Direct current (DC) series 3 coil available only without UL certification

COILS Code ②	Alternating Current						Direct Current				Electrical connection	Connectors
	24V		120V		240V		12V		24V			
Series 3 Width 22mm	U35B cULUS	30B	U35D cULUS	30D	U35F cULUS	30F	-	300	-	301	DIN 46244	PG9 code 10348000
Series 4 Width 30mm	-	40B	-	40D	-	40F	U450 cULUS	400	U451 cULUS	401	DIN 43650A	PG9 code 10349000

DESCRIPTION
 Class F or H insulation
 Voltage tolerance ±10%
 Protection class:
 IP65 with connector attached
 IP00 without connector
 Continuous service ED100%

OPTIONS
 Cable attached
 Special coil voltage
 Special coil powers

OVERALL DIMENSIONS

inches (mm)



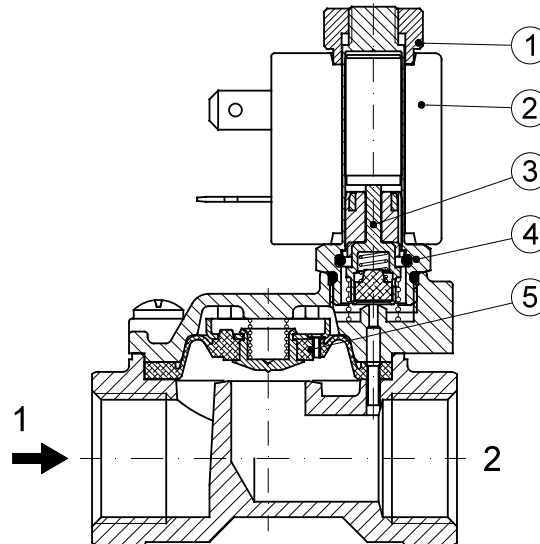
Series 3 Weight 0.11lb (0.05Kg)

Series 4 Weight 0.22lb (0.1Kg)

FOR COIL SPECIFICATION SEE SECTION 6

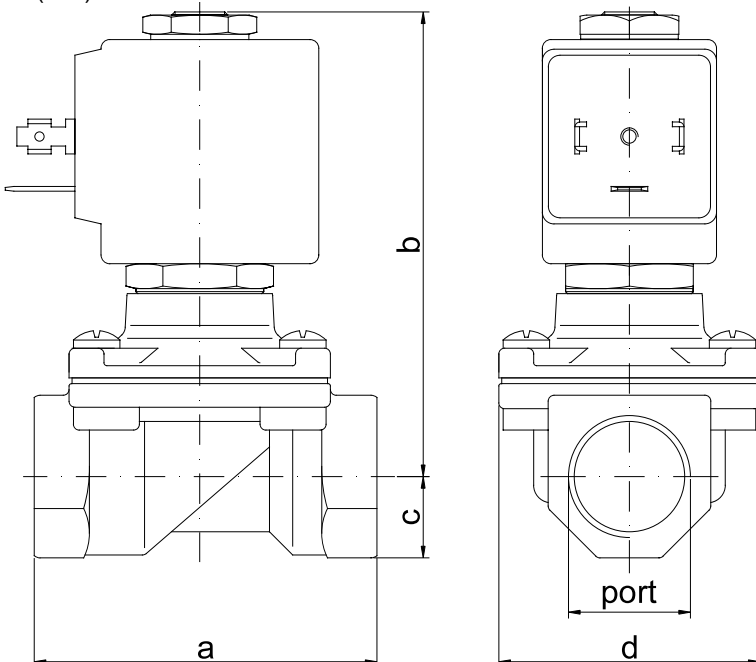
SPARE PARTS LIST

1. Coil fixing nut
2. Coil
3. Seal assembly
4. Armature tube with core
5. Diaphragm assembly



OVERALL DIMENSIONS

inches (mm)



PORT SIZE	a		b		c		d		weight	
	in	mm	in	mm	in	mm	in	mm	lb	Kg
3/8	2.32	59	2.87	73	0.55	14	1.77	45	0.66	0.30
1/2	2.32	59	2.87	73	0.55	14	1.77	45	0.71	0.32
3/4	3.11	79	2.99	76	0.71	18	2.17	55	1.21	0.55
1	3.78	96	3.35	85	0.79	20	2.83	72	2.09	0.95