

DESCRIPTION

Solenoid valve 2 way normally closed
direct acting poppet type.

With explosion proof coil certified for hazardous area:

⊕ II 2GD Ex d IIC T6 or T5 or T4 Gb
Ex tb IIC T80°C or T95°C or T130°C Db IP66
T176°F or T203°F or T266°F
Tamb -10°C ÷ +35°C(T6) or +50°C(T5) or +60°C(T4)
+14°F ÷ +95°F(T6) or +122°F(T5) or +140°F(T4)
(other certifications e.g. Gost-r, Baseefa, CCOE etc. on request)



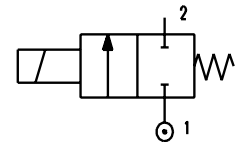
2

VALVE CONSTRUCTION

Body Brass
Seal material FPM

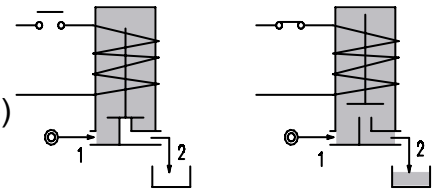
EXPLOSION PROOF COIL CONSTRUCTION

Housing Red colour alloy
Electrical connection 1/2 NPT



FEATURES

Maximum fluid viscosity 25cSt (mm²/s)
Ambient temperature: +14°F ÷ +95°F(T6), +122°F(T5), +140°F(T4)
Mounting position with vertical coil above



OPTIONS: Manual override
Electroless nickel plating
Stainless steel seat

NOTE: The solenoid valve is suitable only with media that are **NOT** potentially explosive

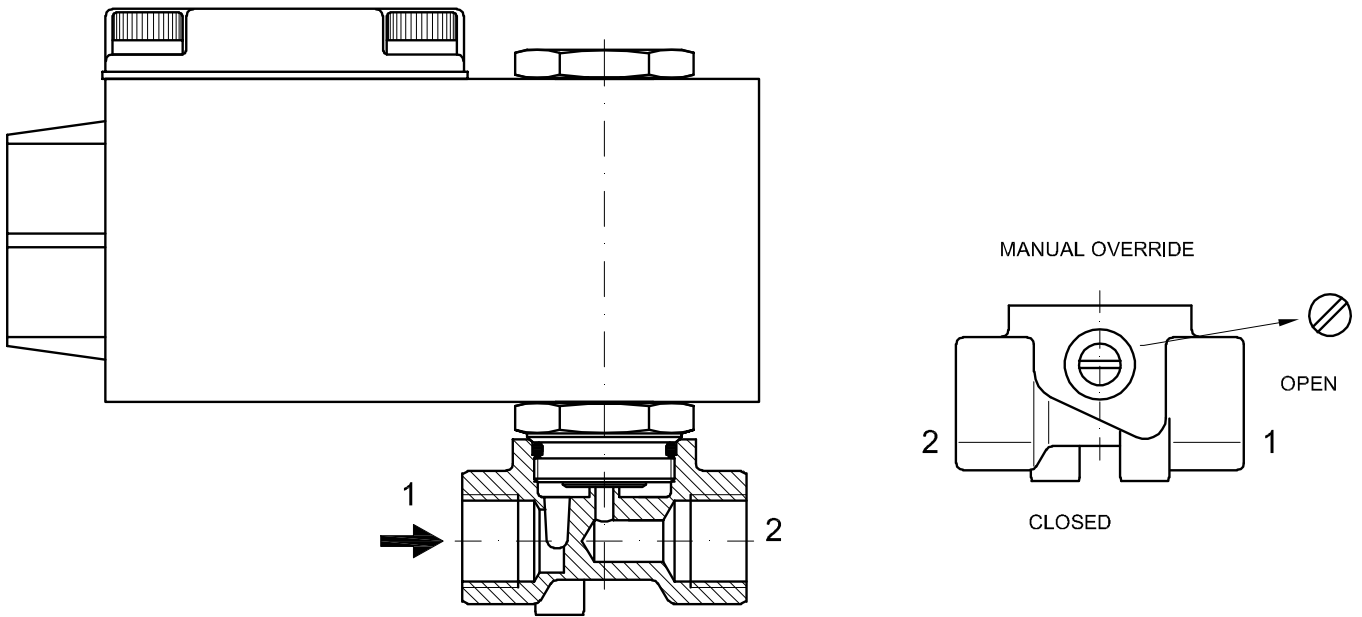
CODE ②	Port Size NPT	Orifice Size		Flow Factor Cv	Operating Pressure Differential (M.O.P.D.) ③				Nominal power		Coil Series	Seal	Temp. range (°F)	
		(in)	(mm)		Min	Max		AC (VA) Holding	DC (W)					
						AC (psi)	AC (bar)			DC (psi)				DC (bar)
A106BNV15///...	1/4	0.059	1.5	0.081	0	435	30	377	26	12	8	A6	FPM=V	+14 +284
A106BNV20///...		0.079	2	0.116	0	319	22	290	20					
A106BNV25///...		0.098	2.5	0.173	0	232	16	203	14					
A106BNV35///...		0.138	3.5	0.370	0	145	10	116	8					
A106BNV45///...		0.177	4.5	0.474	0	94	6.5	50	3.5					
A106BNV52///...		0.205	5.2	0.543	0	58	4	26	1.8					
A106BNV64///...		0.252	6.4	0.740	0	43.5	3	14.5	1					

② Coil

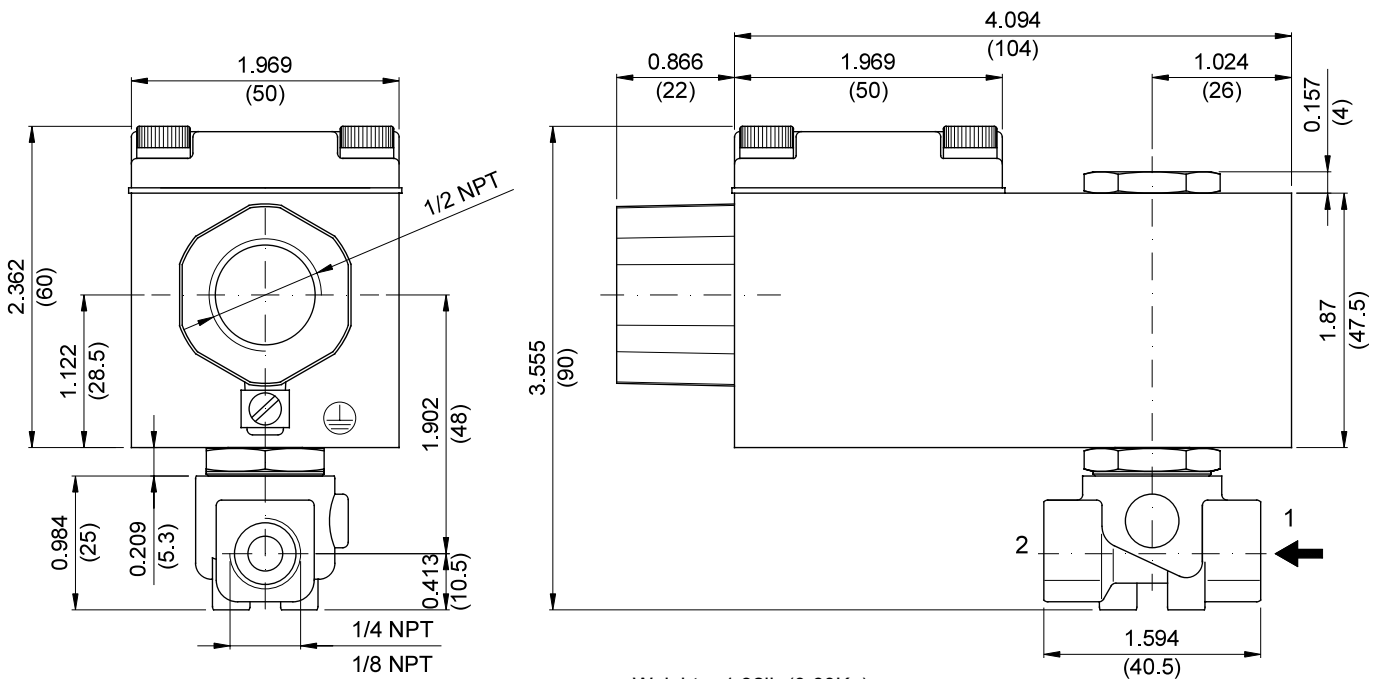
③ Safe Working Pressure:1160 psi. Is the line or system pressure to which the valve may be subjected without being damaged.

COILS Code ②	Alternating Current				Direct Current			Electrical connection
	24V	48V	110V	220V 230V	12V	24V	48V	
Series 6	A6B	A6C	A6D	A6E	A60	A61	A62	1/2 NPT

DESCRIPTION
 Voltage tolerance $\pm 10\%$
 Protection class IP66
 Continuous service ED100%



OVERALL DIMENSIONS
 inches (mm)



Weight = 1.32lb (0.60Kg)

DESCRIPTION

Solenoid valve 2 way normally closed
direct acting poppet type.

With explosion proof coil certified for hazardous area:

⊕ Ex II 2GD Ex d IIC T6 or T5 or T4 Gb
Ex tb IIC T80°C or T95°C or T130°C Db IP66
T176°F or T203°F or T266°F
Tamb -10°C ÷ +35°C(T6) or +50°C(T5) or +60°C(T4)
+14°F ÷ +95°F(T6) or +122°F(T5) or +140°F(T4)
(other certifications e.g. Gost-r, Baseefa, CCOE etc. on request)



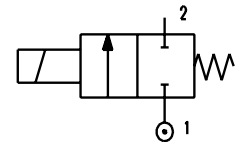
2

VALVE CONSTRUCTION

Body Brass
Seal material FPM

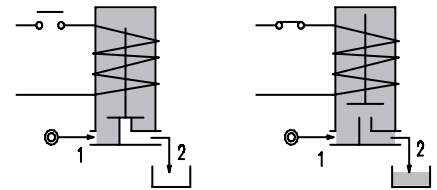
EXPLOSION PROOF COIL CONSTRUCTION

Housing Red colour alloy
Electrical connection 1/2 NPT



FEATURES

Maximum fluid viscosity 25cSt (mm²/s)
Ambient temperature: +14°F ÷ +95°F(T6), +122°F(T5), +140°F(T4)
Mounting position with vertical coil above



OPTIONS: Electroless nickel plating

NOTE: The solenoid valve is suitable only with media that are **NOT** potentially explosive

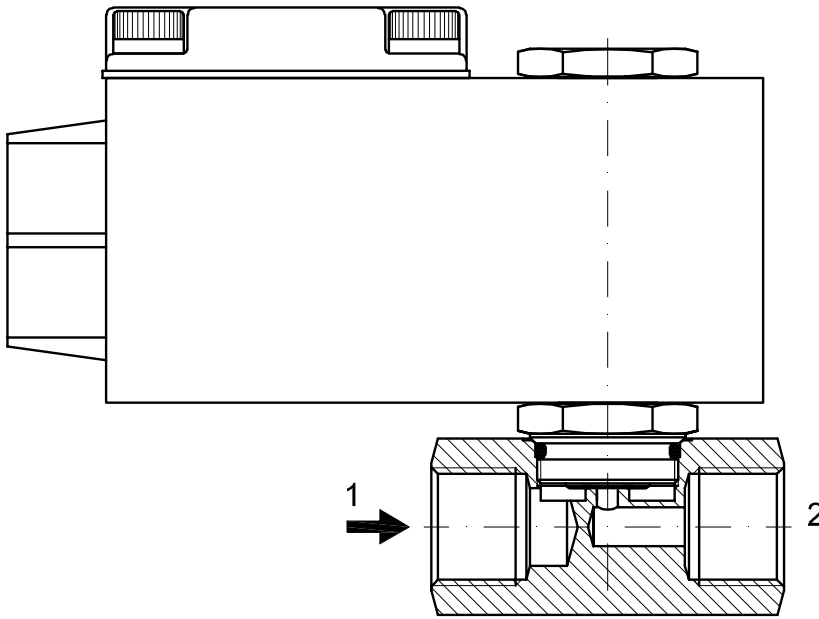
CODE	Port Size	Orifice Size		Flow Factor Cv	Operating Pressure Differential (M.O.P.D.) ③				Nominal power		Coil Series	Seal	Temp. range	
					Min	Max		AC (VA) Holding	DC (W)					
						(psi)	(bar)			(psi)				(bar)
②	NPT	(in)	(mm)	(gpm)		AC (psi)	AC (bar)	DC (psi)	DC (bar)			(°F)		
A106CNV30///...	3/8	0.118	3	0.289	0	217	15	145	10	12	8	A6	FPM=V	+14 +284
A106CNV35///...		0.138	3.5	0.370	0	145	10	116	8					
A106CNV40///...		0.157	4	0.416	0	116	8	72.5	5					
A106CNV45///...		0.177	4.5	0.474	0	94	6.5	50	3.5					
A106CNV52///...		0.205	5.2	0.543	0	58	4	26	1.8					
A106CNV64///...		0.252	6.4	0.740	0	43.5	3	14.5	1					
A106DNV30///...	1/2	0.118	3	0.289	0	217	15	145	10	12	8	A6	FPM=V	+14 +284
A106DNV35///...		0.138	3.5	0.370	0	145	10	116	8					
A106DNV40///...		0.157	4	0.416	0	116	8	72.5	5					
A106DNV45///...		0.177	4.5	0.474	0	94	6.5	50	3.5					
A106DNV52///...		0.205	5.2	0.543	0	58	4	26	1.8					
A106DNV64///...		0.252	6.4	0.740	0	43.5	3	14.5	1					

② Coil

③ Safe Working Pressure:1160 psi. Is the line or system pressure to which the valve may be subjected without being damaged.

COILS Code ②	Alternating Current				Direct Current			Electrical connection
	24V	48V	110V	220V 230V	12V	24V	48V	
Series 6	A6B	A6C	A6D	A6E	A60	A61	A62	1/2 NPT

DESCRIPTION
 Voltage tolerance $\pm 10\%$
 Protection class IP66
 Continuous service ED100%



OVERALL DIMENSIONS
 inches (mm)

