

**DESCRIPTION**

Solenoid valve 2 way normally closed with servo-assisted diaphragm series 107.

With explosion proof coil certified for hazardous area:

⊕ Ex II 2GD Ex d IIC T6 or T5 or T4 Gb  
 Ex tb IIC T80°C or T95°C or T130°C Db IP66  
 T176°F or T203°F or T266°F  
 Tamb -10°C ÷ +35°C(T6) or +50°C(T5) or +60°C(T4)  
 +14°F ÷ +95°F(T6) or +122°F(T5) or +140°F(T4)  
 (other certifications e.g. Gost-r, Baseefa, CCOE etc. on request)



**VALVE CONSTRUCTION**

Body Brass  
 Seal material FPM

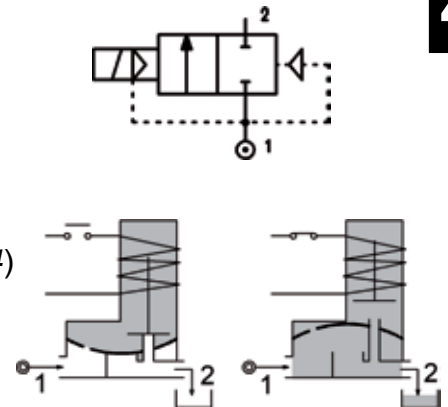
**EXPLOSION PROOF COIL CONSTRUCTION**

Housing Red colour alloy  
 Electrical connection 1/2" NPT

**FEATURES**

Minimum differential pressure 2.2-4.4psi  
 Maximum fluid viscosity 25cSt (mm<sup>2</sup>/s)  
 Ambient temperature: +14°F ÷ +95°F(T6), +122°F(T5), +140°F(T4)  
 Mounting position with vertical coil above

**OPTIONS:** Electroless nickel plating  
 Versions with slow closing diaphragm



**4**

**NOTE:** The solenoid valve is suitable only with media that are **NOT** potentially explosive

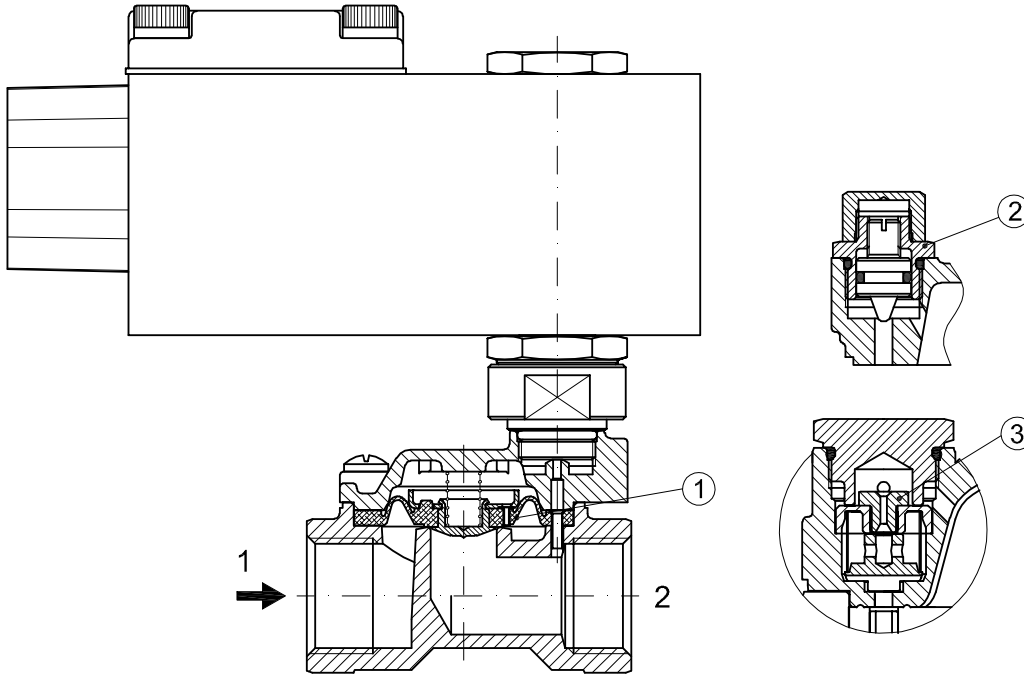
CODE	Port Size	Orifice Size		Flow Factor Cv	Operating Pressure Differential (M.O.P.D.) ③						Nominal power		Coil Series	Seal	Temp. range
					Min		Max				AC (VA) Holding	DC (W)			
					(psi)	(bar)	AC		DC						
② NPT	(in)	(mm)	(gpm)	(psi)	(bar)	(psi)	(bar)	(psi)	(bar)			(°F)			
A107BNV10/1/...	1/4	0.394	10	1.73	2.2	0.15	217	15	217	15	12	8	A6	FPM=V	+14 +284
A107CNV10/1/...	3/8	0.394	10	1.97	2.2	0.15	217	15	217	15					
A107CNV12/1/...	3/8	0.472	12	2.54	2.2	0.15	217	15	217	15					
A107DNV12/1/...	1/2	0.472	12	2.89	2.2	0.15	217	15	217	15					
A107ENV18/1/...	3/4	0.709	18	6.36	2.2	0.15	188	13	188	13					
A107FNV25/1/...	1	0.984	25	11.7	2.2	0.15	145	10	145	10					
A107GNV30/1/...	1-1/4	1.181	30	17.3	2.2	0.15	145	10	145	10					
A107GNV37/1/...	1-1/4	1.457	37	20.8	2.2	0.15	145	10	145	10					
A107HNV37/1/...	1-1/2	1.457	37	24.3	2.2	0.15	145	10	145	10					
A107INV50/1/...	2	1.969	50	41.6	2.2	0.15	145	10	145	10					
A107MNB75/1/...	2-1/2	2.953	75	86.7	4.4	0.3	72.5	5	72.5	5					
A107RNB75/1/...	3	2.953	75	97.1	4.4	0.3	72.5	5	72.5	5					

② Coil

③ Safe Working Pressure:290 psi. Is the line or system pressure to which the valve may be subjected without being damaged.

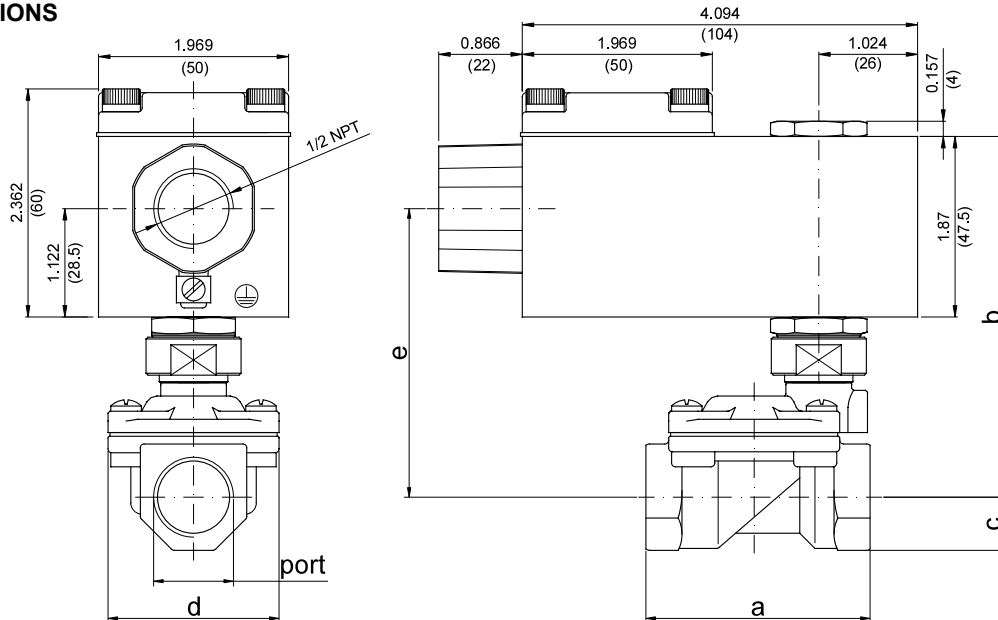
COILS Code ②	Alternating Current 50/				Direct Current			Electrical connection
	24V	48V	110V	220V 230V	12V	24V	48V	
Series 6	A6B	A6C	A6D	A6E	A60	A61	A62	1/2 NPT

**DESCRIPTION**  
 Voltage tolerance  $\pm 10\%$   
 Protection class IP66  
 Continuous service ED100%



### OVERALL DIMENSIONS

inches (mm)



PORT SIZE	a		b		c		d		e		weight	
	in	mm	in	mm	in	mm	in	mm	in	mm	lb	Kg
1/4 Ø0.394 (Ø10)	1.93	49	3.54	90	0.43	11	1.26	32	2.80	71	1.58	0.72
3/8 Ø0.394 (Ø10)	1.93	49	3.54	90	0.43	11	1.26	32	2.80	71	1.58	0.72
3/8 Ø0.472 (Ø12)	2.32	59	3.74	95	0.55	14	1.77	45	2.99	76	2.03	0.92
1/2 Ø0.472 (Ø12)	2.32	59	3.74	95	0.55	14	1.77	45	2.99	76	2.03	0.92
3/4	3.11	79	3.98	101	0.71	18	2.13	54	3.23	82	2.43	1.10
1	3.78	96	4.33	110	0.79	20	2.83	72	3.58	91	3.31	1.50

PORT SIZE	a		b		c		d		e		weight	
	in	mm	in	mm	in	mm	in	mm	in	mm	lb	Kg
1-1/4 Ø1.181 (Ø30)	4.69	119	4.65	118	0.98	25	3.35	85	3.90	99	5	2.27
1-1/4	5.59	142	4.33	110	1.10	28	4.02	102	3.58	91	7.34	3.33
1-1/2	5.59	142	4.33	110	1.10	28	4.02	102	3.58	91	6.88	3.12
2	6.22	158	4.69	119	1.38	35	4.69	119	3.94	100	10.4	4.72
2-1/2	8.90	226	5.43	138	2.01	51	6.65	169	4.69	119	22.9	10.4
3	8.90	226	5.43	138	2.01	51	6.65	169	4.69	119	22	10