

**DESCRIPTION**

2 way normally closed angle seat valve pneumatically operated

**PRESENTATION**

- High flow rate due to the angle seat configuration
- Anti-water hammer feature with the fluid entry below the seat
- Stainless steel and corrosion resistance body
- Orientable pneumatic actuator
- Self adjusting internal seal
- Optical position indicator
- Back pressure resistance capability
- Maintenance free sealing pack
- Universal mounting position

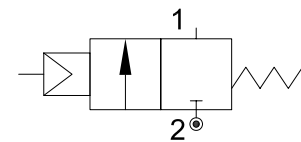


**USE:** Automation, heating, water, hot water, steam (356°F), aggressive and food fluid

**CONNECTION:** from 1/2 to 1 GAS or NPT

**VALVE FEATURES**

Fluid temperature	14°F +356°F
Ambient temperature	14°F +140°F
Fluid viscosity	max 600 cSt
Body material	Stainless steel AISI 316
Seal	PTFE
Packing gland	PTFE/FPM



**5**

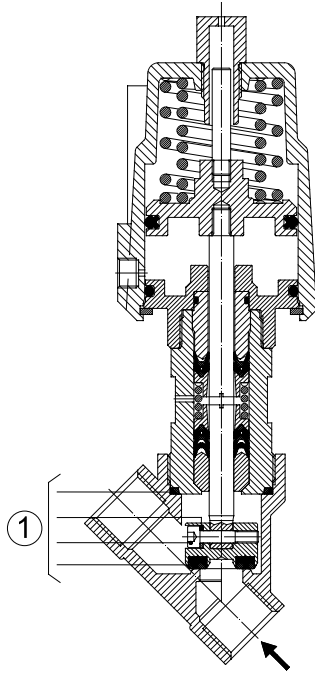
**PILOT ACTUATOR FEATURES**

Fluid	Dry or lubricated air, gases and neutral fluids
Fluid temperature	max +140°F
Body material	Stainless steel AISI 316
Gaskets	NBR
Actuator	Ø2in (Ø50mm)

CODE ①	Port Size	Orifice Size		Flow Factor Cv (gpm)	Actuator pilot pressure				Operating Pressure Differential (M.O.P.D.)				Max allowable pressure PS		Weight	
		(in)	(mm)		Min (psi)	Max (bar)	Min (psi)	Max (bar)	Min (psi)	Max (bar)	Min (psi)	Max (bar)	(lb)	(Kg)		
P150D...W15/V	1/2	0.59	15	21							362	25			3.5	1.6
P150E...W20/V	3/4	0.78	20	39	72.5	5	116	8	0	0	217	15	580	40	3.75	1.7
P150F...W25/V	1	1	25	50							145	10			4.6	2.1

① G= GAS (ISO228)  
N= NPT (ANSI/ASME B1.20.1)

Ordination example: P150FNW25/V connection 1 NPT



### MAINTENANCE KIT

- 1. 1/2 R500078
- 3/4 R500081
- 1 R500084

### OVERALL DIMENSION

CONNECTION GAS or NPT	A		B		C		D		H		L		T	
	in	mm	in	mm	in	mm	in	mm	in	mm	in	mm	in	mm
1/2	7.5	190.6	SW 1-1/16	SW 27	6.14	156	0.60	15.4	5.5	139.7	2.56	65	0.67	17
3/4	7.51	190.8	SW 1-1/4	SW 32	6.38	162	0.84	21.4	5.5	139.8	2.95	75	0.75	19
1	7.89	200.3	SW 1-5/8	SW 41	6.61	168	0.98	25	5.8	146.6	3.54	90	0.81	20.5

