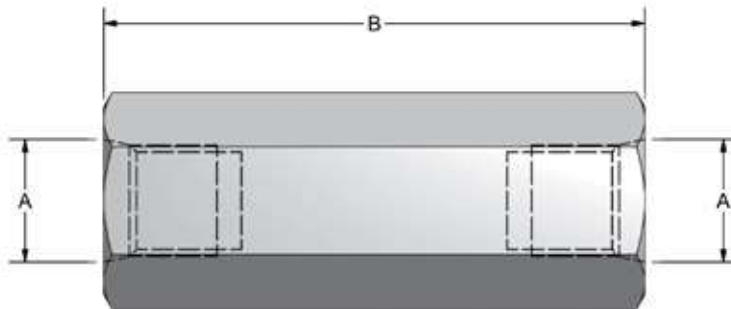
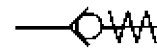


Check Valves - Carbon Steel



- NPTF & SAE Connections
- Carbon Steel with Zinc Chromate Plating (RoHS Compliant)
- Available in 7 PSI & 65 PSI Spring Cracking Pressures
- Metal to Metal Seat
- Hardened Poppet
- Temperature Range -4°F to +176°F
- For hydraulic use only. Consult factory for fluid compatibility.



| NPTF CHECK VALVES | | | | |
|-------------------|------|------|---------|--------------|
| A | B | C | MAX PSI | MAX FLOW GPM |
| 1/4" | 2.17 | .75 | 5700 | 4 |
| 3/8" | 2.68 | .95 | 5700 | 8 |
| 1/2" | 2.95 | 1.06 | 5700 | 13 |
| 3/4" | 3.48 | 1.38 | 5700 | 23 |
| 1" | 4.33 | 1.61 | 5000 | 40 |
| 1 1/4" | 4.72 | 2.17 | 5000 | 50 |
| 1 1/2" | 5.43 | 2.56 | 5000 | 80 |
| 2" | 5.43 | 2.95 | 4500 | 110 |

| SAE CHECK VALVES | | | | |
|------------------|------|------|---------|--------------|
| A | B | C | MAX PSI | MAX FLOW GPM |
| #4 | 2.17 | 0.75 | 5700 | 4 |
| #6 | 2.28 | 0.75 | 5700 | 8 |
| #8 | 2.72 | .95 | 5700 | 13 |
| #12 | 3.48 | 1.38 | 5700 | 23 |
| #16 | 4.33 | 1.61 | 5000 | 40 |
| #20 | 4.72 | 2.17 | 5000 | 50 |
| #24 | 5.43 | 2.56 | 5000 | 80 |
| #32 | 5.43 | 2.95 | 4500 | 110 |



Check Valves - Carbon Steel

Model Code Breakdown

C N 1/2 - 1 - 7

VALVE SERIES

THREAD TYPE

| | |
|----|---------------------|
| N | NPTF Pipe Thread |
| S# | SAE Straight Thread |

THREAD SIZE

| | |
|---------|------|
| Example | N1/2 |
| | S#8 |

CRACKING PRESSURE

| | |
|----|--------|
| 7 | 7 PSI |
| 65 | 65 PSI |

MATERIAL

| | |
|---|--------------|
| 1 | Carbon Steel |
|---|--------------|

